



Gaining Insights from Db2 Statistics and Accounting Data

Todd Havekost – Senior z/OS Performance Consultant
Virtual Db2 User Group – November 2023

Agenda

- Challenges Gaining Insights from SMF Data
- Gaining Insights from Db2 Statistics Data
- Gaining Insights from Db2 Accounting Data
- Capabilities to Gain More Insights from SMF Data





Challenges Gaining Insights from SMF Data

Challenges Deriving Value from SMF Data

- Primarily used in reactive manner
- Siloed tooling across disciplines
- Need to anticipate desired views in static reports
- Focused analysis despite massive data volumes
- Declining expertise with retirements of tenured staff



Gaining Insights from Db2 Statistics Data

Agenda: Gaining Insights from Db2 Statistics Data

- Insights from Assessments of Key Metrics
- Insights from Buffer Pool Metrics
- Insights from Integrating IFCID 199 Data with Dataset I/O Performance Data (SMF 42)
- Insights from Other Db2 Statistics Metrics





Insights from Assessments of Key Metrics

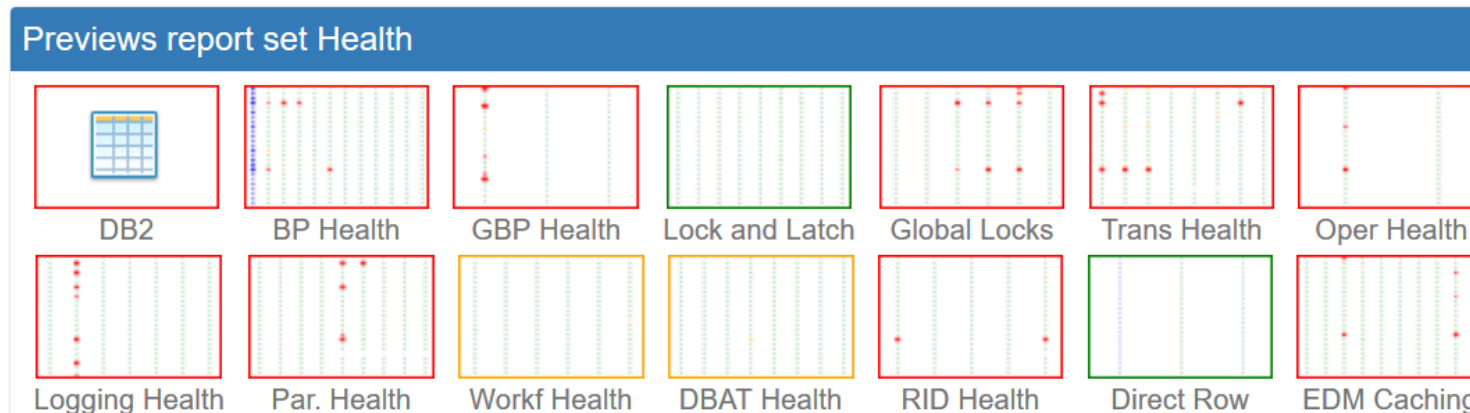
Db2 Statistics Health Assessments

Views direct your attention to potential issues

- 80+ metrics rated for health, based on best practices
- Summarized by DSG, drilldowns by member, buffer pool size and number

Examples include:

- Buffer Pools and GBPs
- Locks and Latches
- Logging
- Parallelism





Insights from Buffer Pool Metrics

z/OS Memory & Db2: A Match Made in Heaven

- Db2 is biggest mainstream exploiter of large quantities of memory
- Db2 keeps delivering new ways to leverage memory for improved application performance and CPU efficiency
- Db2 buffer pools represent the single biggest opportunity to leverage that incremental memory

Db2 Buffer Pool Tuning: Key Metrics

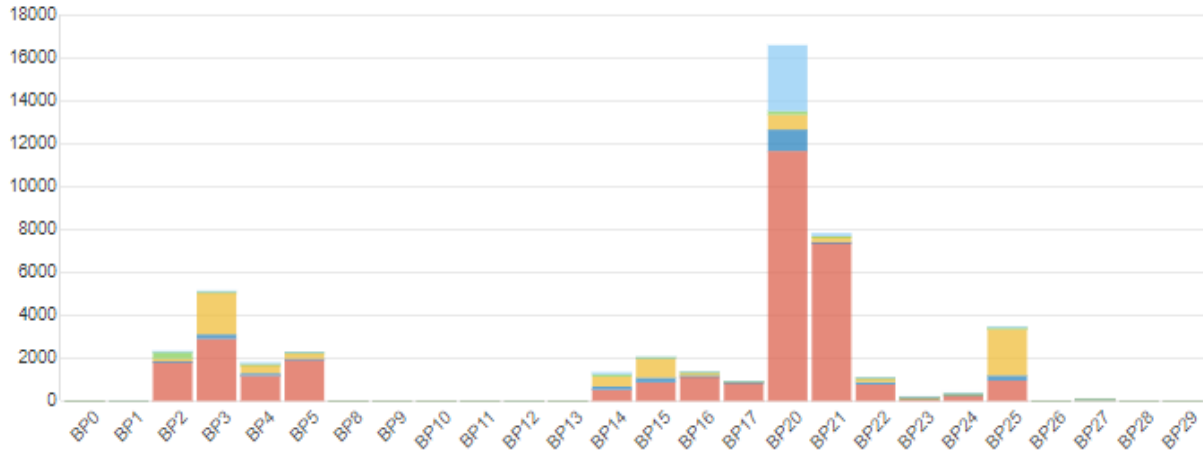
- Primary focus metrics differ across methodologies
 - Total read I/O rate
 - Page residency time
 - Random buffer hit ratio

READ DISK I/O ACTIVITY (4K BUFFER POOLS)

For Data Sharing Group 'DB2H' by DB2 Buffer Pool

Full report

Single day 7/2/2021
Interest group IGT, All sysplexes, All shifts, Interval Measurement

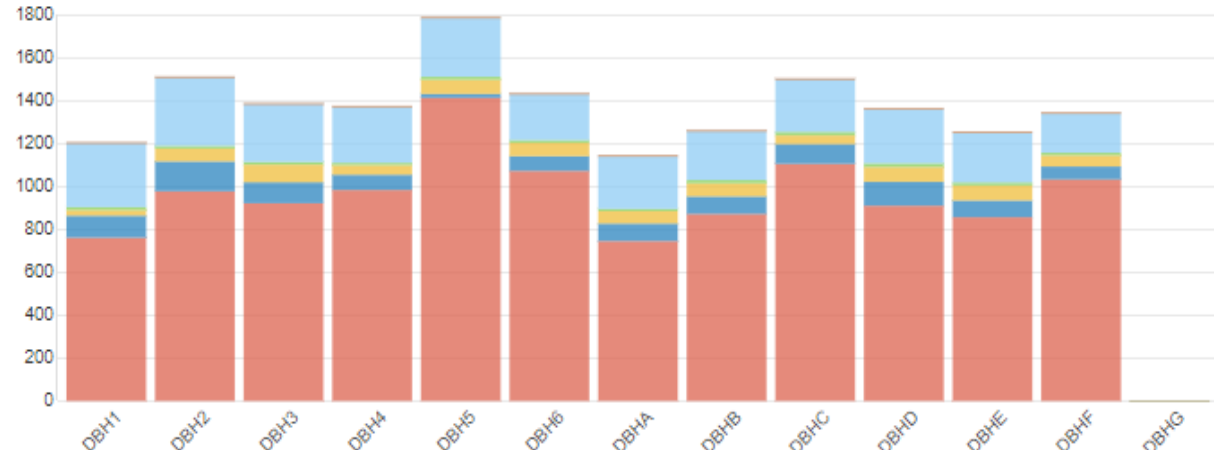


READ DISK I/O ACTIVITY (4K BUFFER POOLS)

For Data Sharing Group 'DB2H' by DB2 Member Name where DB2 Buffer Pool = 'BP20'

Full report

Single day 7/2/2021
Interest group IGT, All sysplexes, All shifts, Interval Measurement

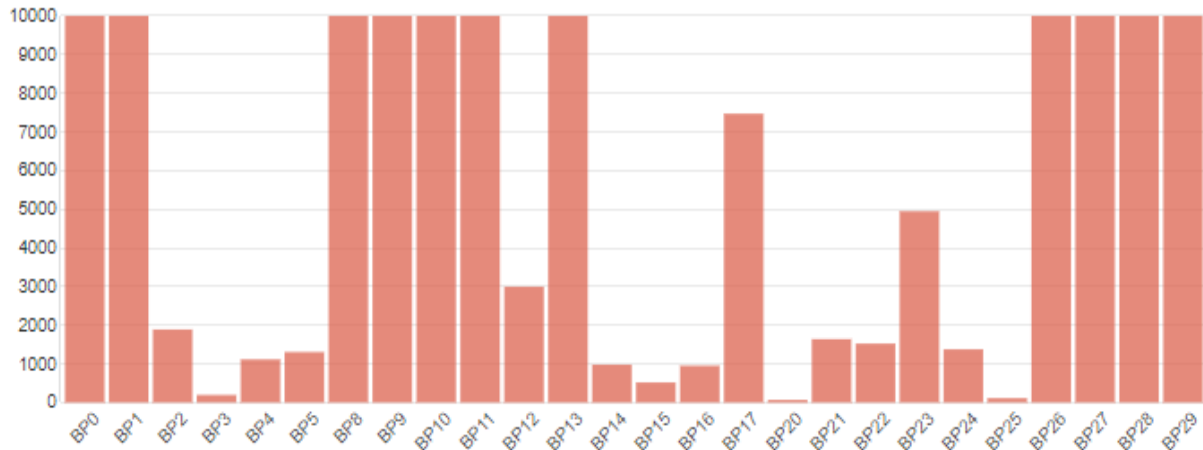


PAGE RESIDENCY TIME IN BUFFER POOL

For Data Sharing Group 'DB2H', for Buffer Size '4K' by DB2 Buffer Pool

Full report

Single day 7/2/2021
Interest group IGT, All sysplexes, All shifts, Interval Measurement

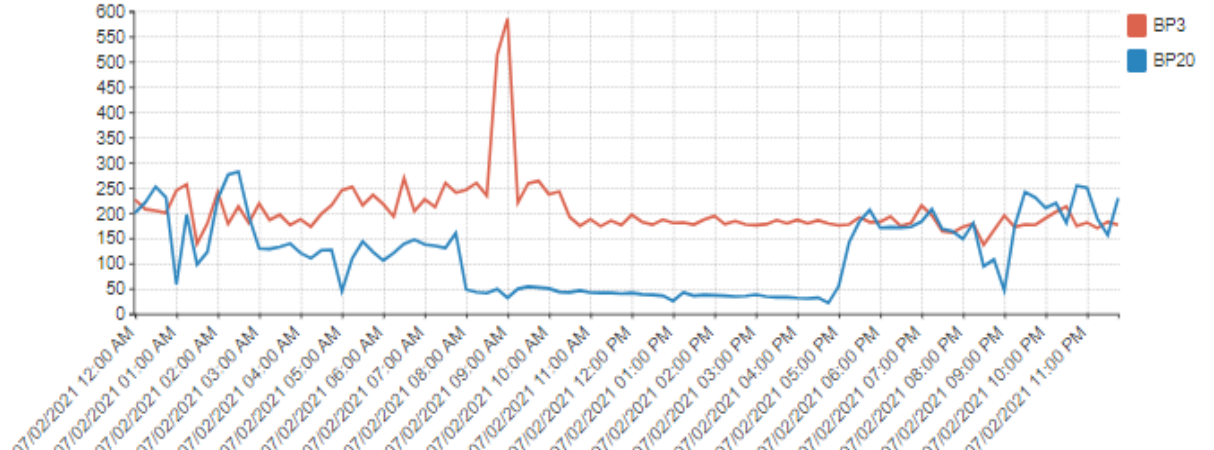


PAGE RESIDENCY TIME IN BUFFER POOL

For Data Sharing Group 'DB2H', for Buffer Size '4K' by DB2 Buffer Pool

Full report

Single day 7/2/2021
Interest group IGT, All sysplexes, All shifts, Interval Measurement

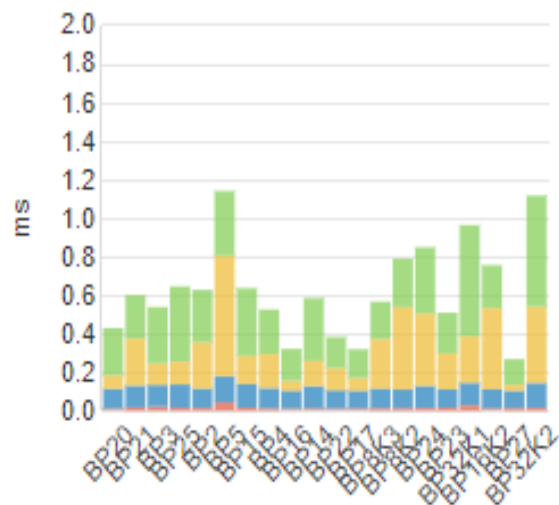




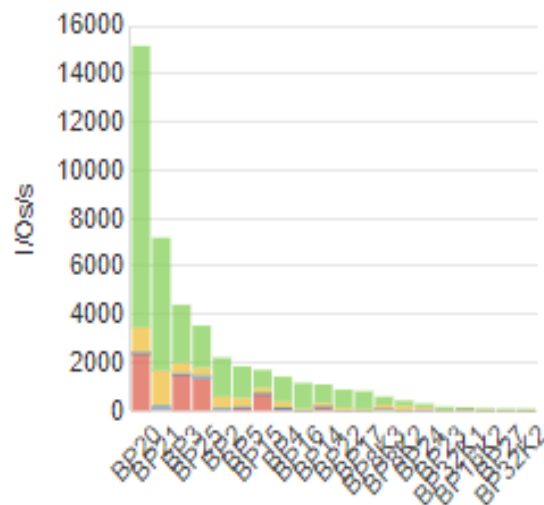
Insights from Integrating IFCID 199 Data with Dataset I/O Performance Data (42)

IFCID: Instrumentation Facility Component Identifier

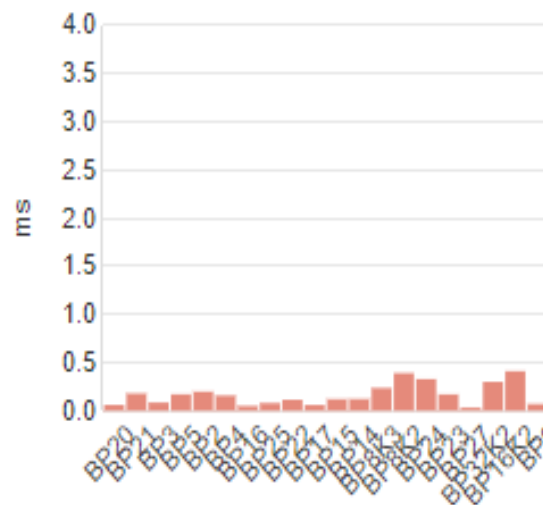
Disk Response Time Components (top 20)



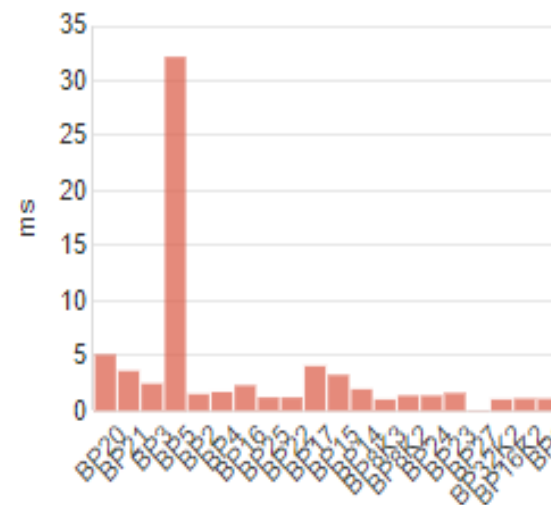
Synchronous Disk Cache Hit and Miss (top 20)



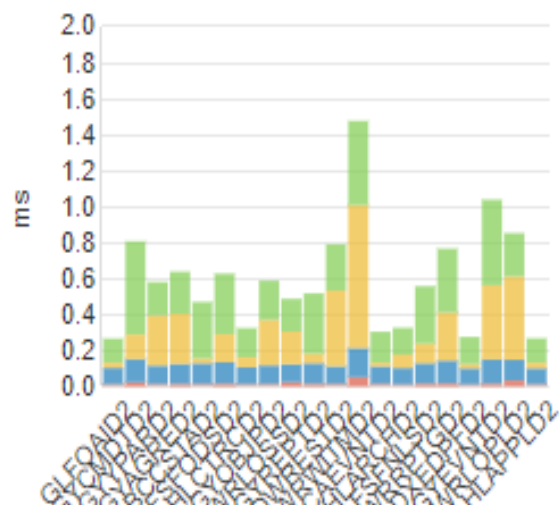
Read Disconnect Time (top 20)



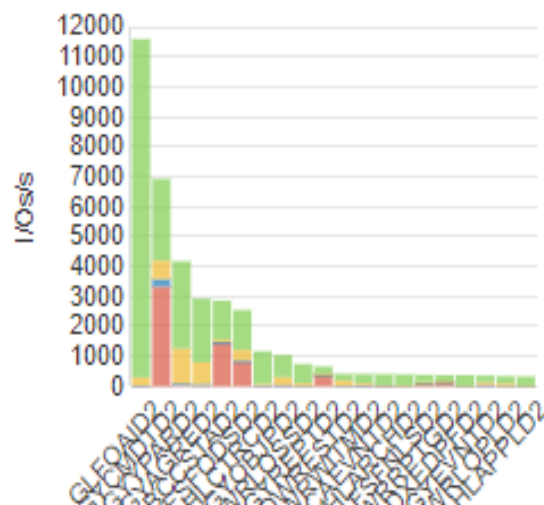
Write Disconnect Time (top 20)



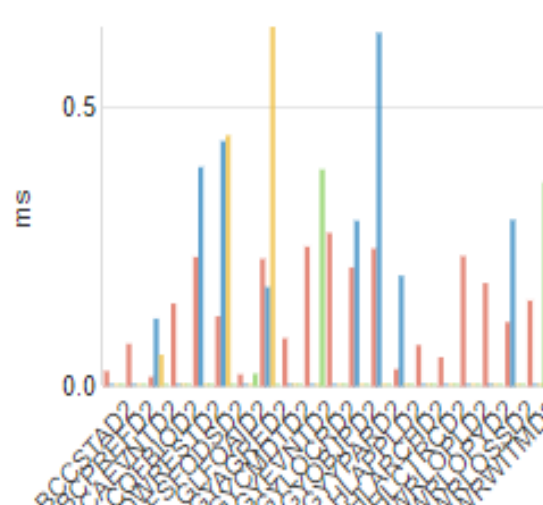
Disk Response Time Components (top 20)



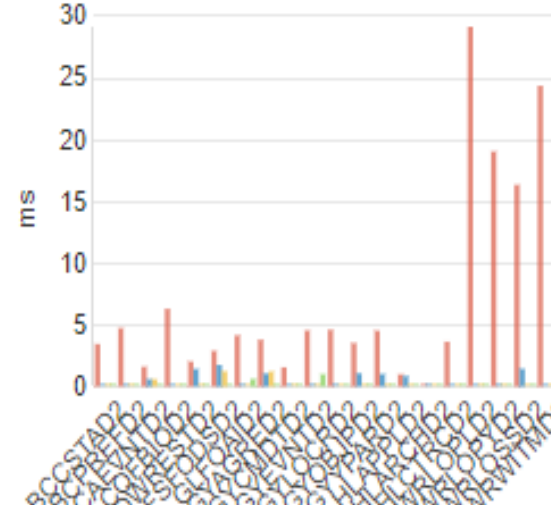
Synchronous Disk Cache Hit and Miss (top 20)



Read Disconnect Time (top 20)



Write Disconnect Time (top 20)

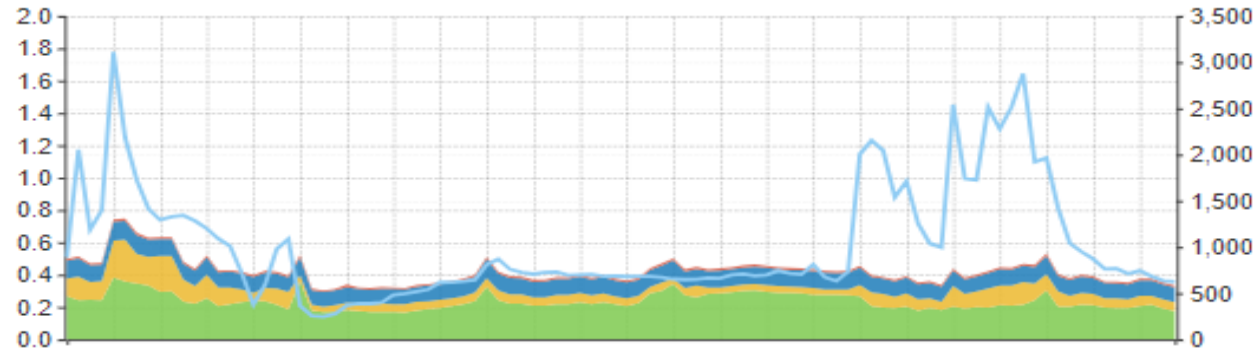


DISK RESPONSE TIME COMPONENTS

For DB2 Buffer Pool 'BP20'

Full report

Single day 7/1/2021
Interest group IGT, All sysplexes, All shifts, Interval Measurement

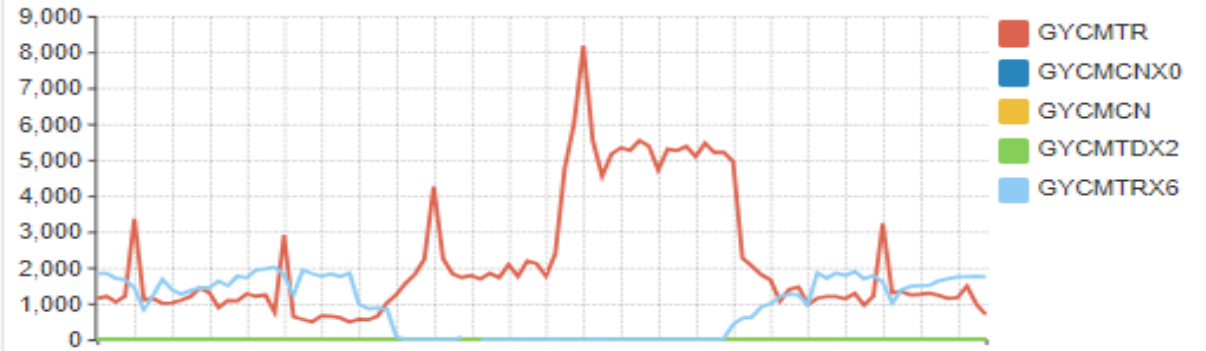


SEQUENTIAL I/Os (TOP 5)

For Database Name 'GYCMDTD2' by Page Set

Full report

Single day 7/1/2021
Interest group IGT, All sysplexes, All shifts, Interval Measurement

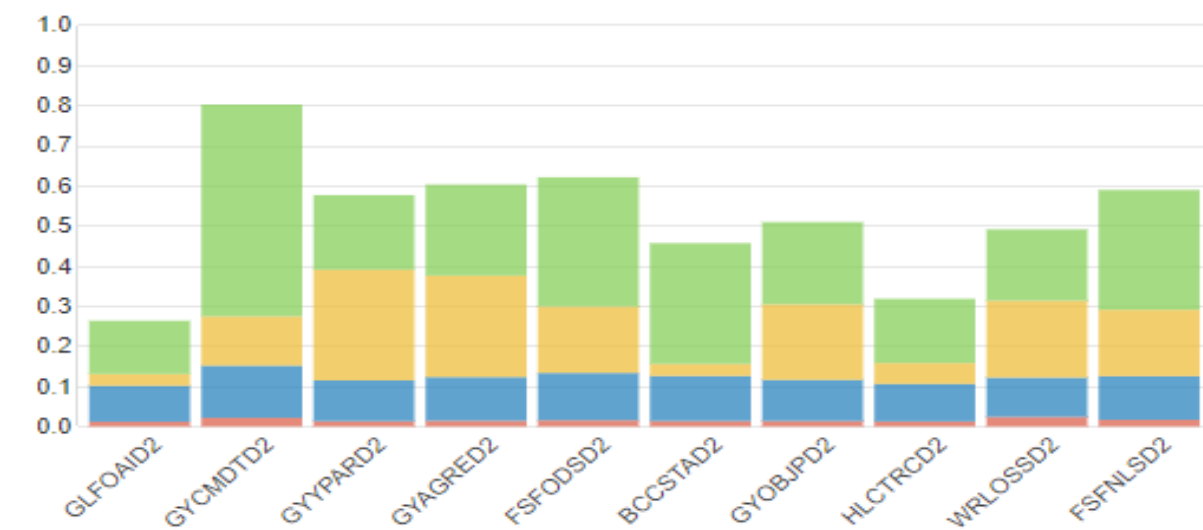


DISK RESPONSE TIME COMPONENTS (TOP 10)

for all Buffer Pools by Database Name

Full report

Single day 7/1/2021
Interest group IGT, All sysplexes, All shifts, Interval Measurement

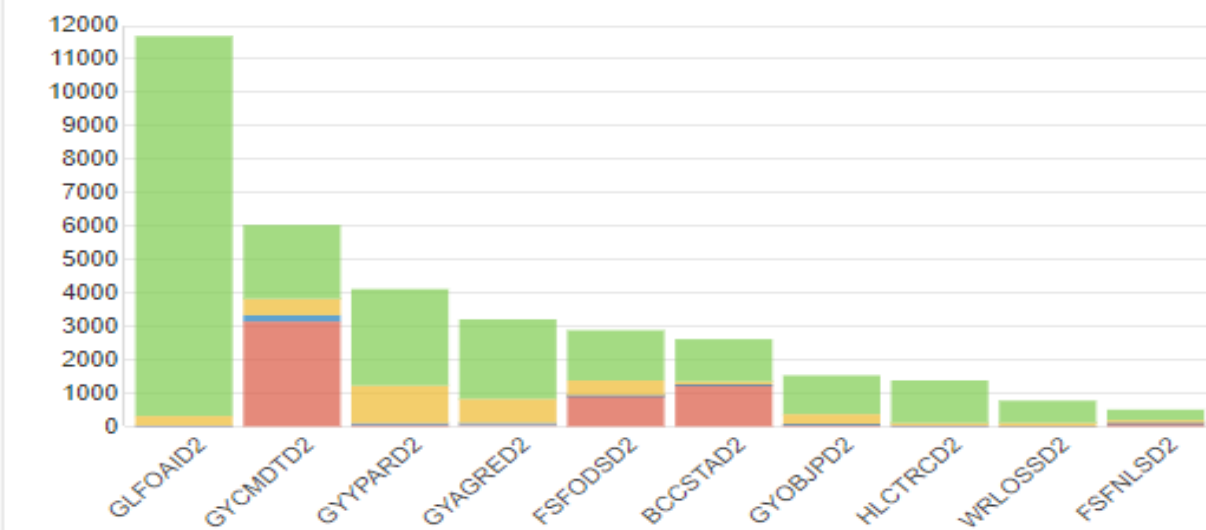


SYNCHRONOUS DISK CACHE HIT AND MISS (TOP 10)

for all Buffer Pools by Database Name

Full report

Single day 7/1/2021
Interest group IGT, All sysplexes, All shifts, Interval Measurement





Insights from Other Db2 Statistics Metrics

Exploring Other Db2 Statistics Metrics

- Commits
- Locks and Latches
- Global locking
- Logging
- SQL statement counts by type
- Prefetch requests and pages per I/O by prefetch type

TCB and SRB Usage
Commits and Failures
DB2 Commands
Latches
Locks
DDF Message Activity
Logger Statistics
DBAT Statistics

SQL Statistics
Parallelism
Workfiles
RID Processing
Global Locking
EDM Pool Usage
IFC 225 Address Spaces
IFC 225 Shared and Common Storage

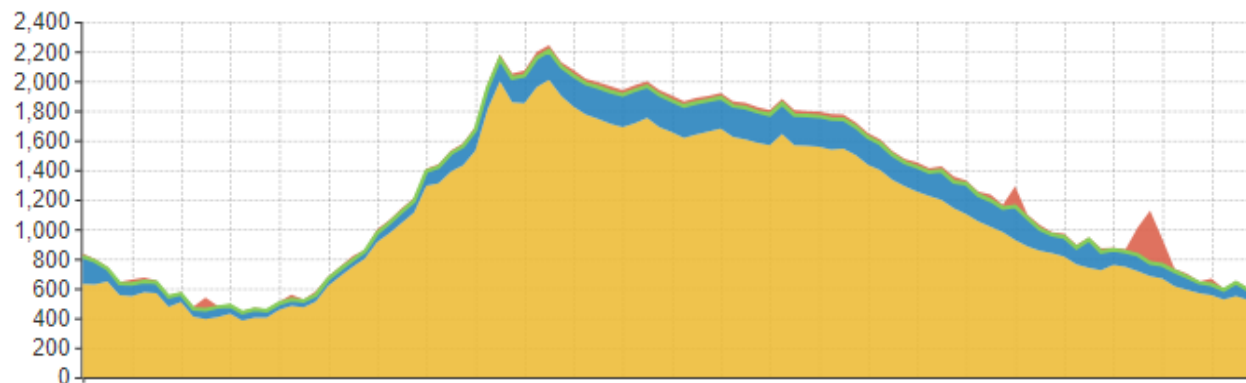
TRANSACTION COMMIT TYPES

For Data Sharing Group 'DB2H'

Full report

Single day 7/2/2021

Interest group IGT, All sysplexes, All shifts, Interval Measurement



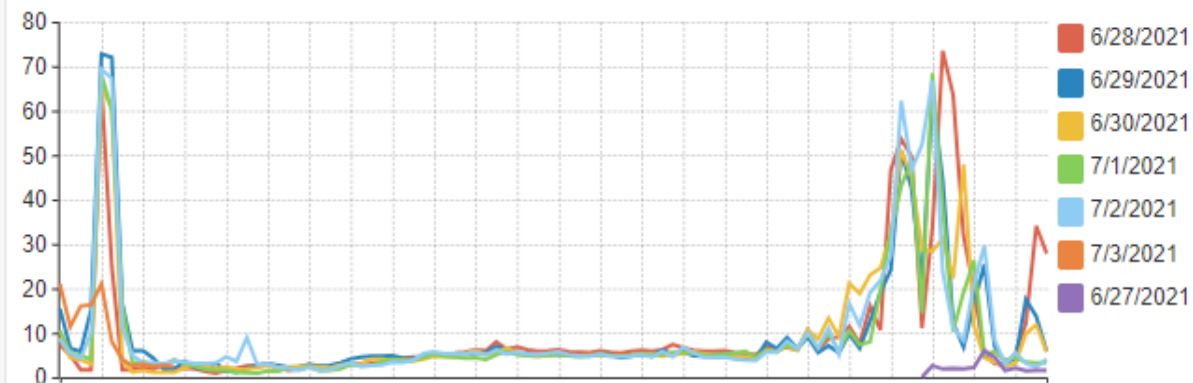
LOG THROUGHPUT

For Data Sharing Group 'DB2H' by Date

Full report

All data 6/27/2021 12:00 AM - 7/3/2021 2:59 AM

Interest group IGT, All sysplexes, All shifts, Interval Measurement



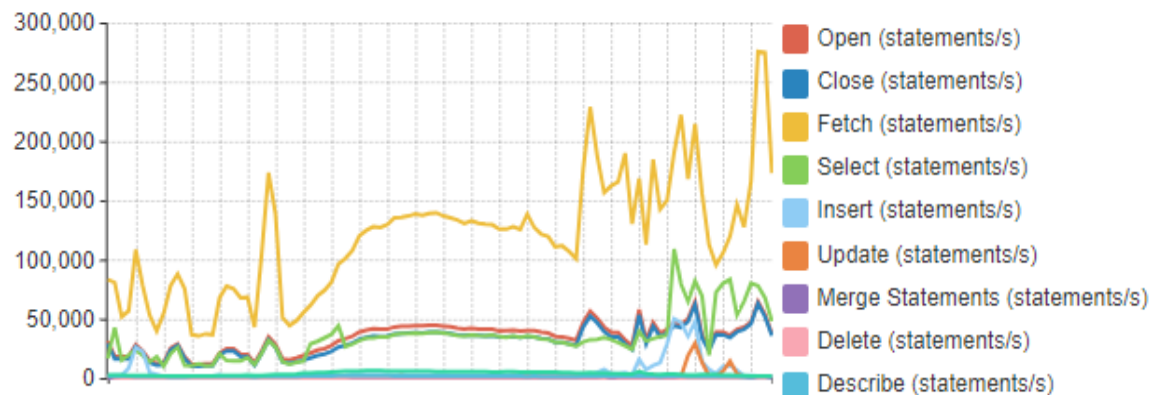
SQL STATEMENTS

For Data Sharing Group 'DB2H'

Full report

Single day 7/2/2021

Interest group IGT, All sysplexes, All shifts, Interval Measurement



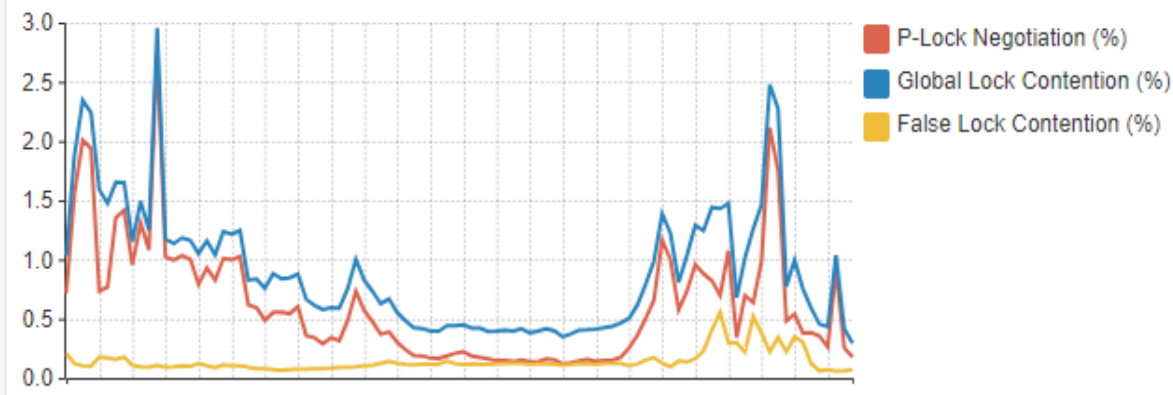
P-LOCK, TRUE AND FALSE LOCK CONTENTION

For Data Sharing Group 'DB2H'

Full report

Single day 7/2/2021

Interest group IGT, All sysplexes, All shifts, Interval Measurement

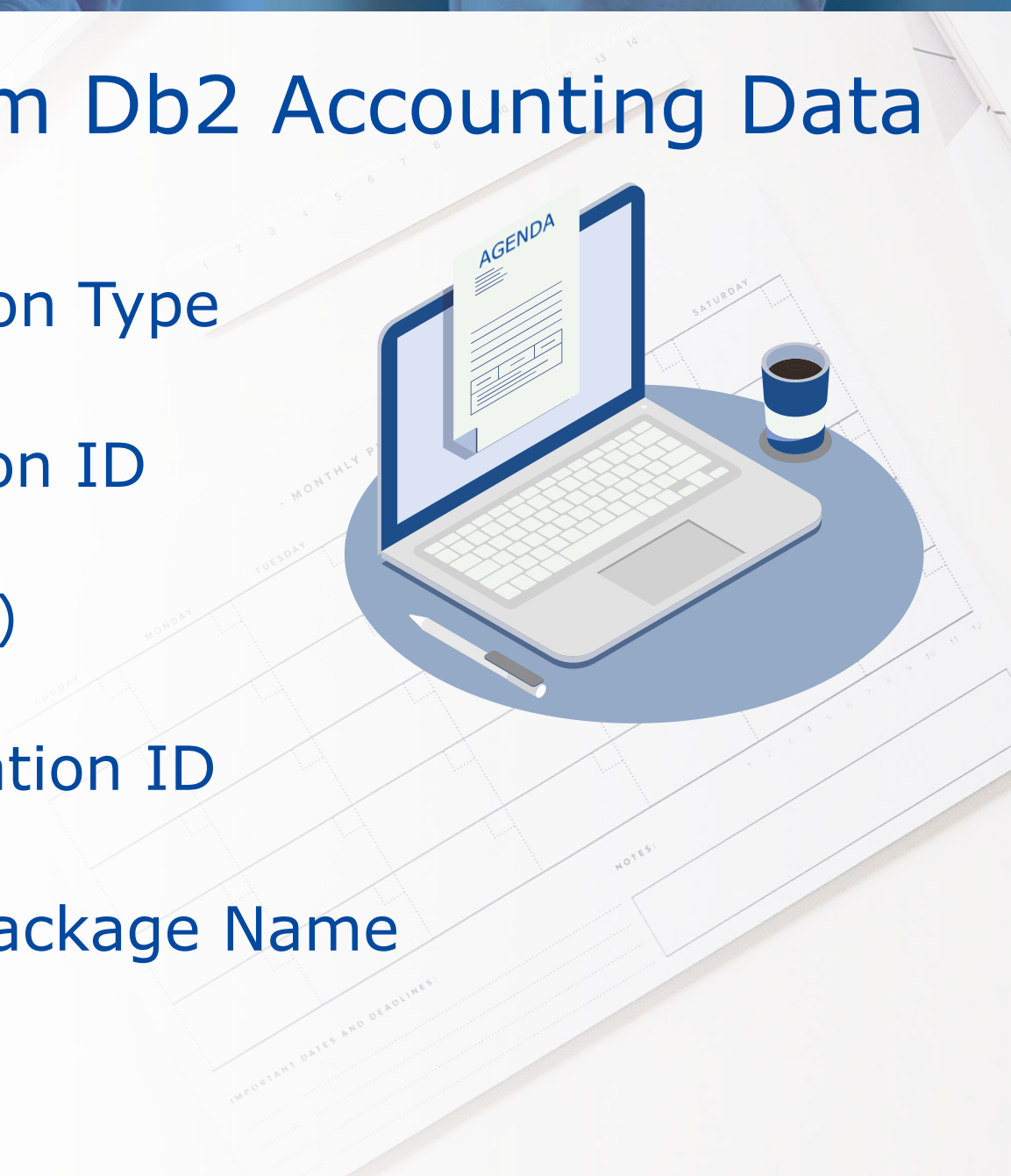




Gaining Insights from Db2 Accounting Data

Agenda: Gaining Insights from Db2 Accounting Data

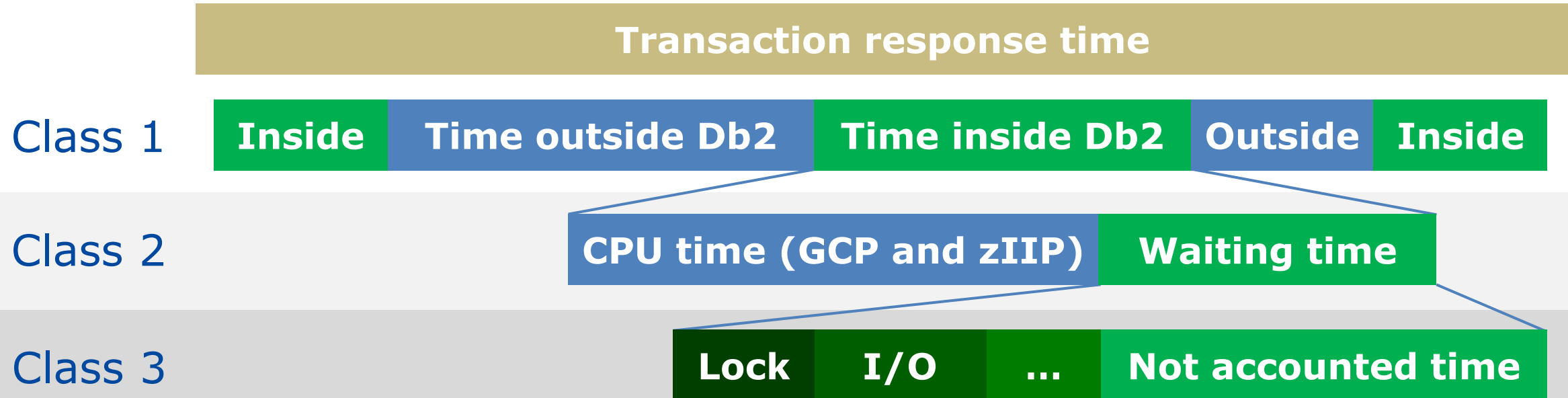
- Insights from Analysis by Connection Type
- Insights from Analysis by Correlation ID
 - Integrating Accounting Data with CICS Transaction Data (SMF 110.1)
- Insights from Analysis by Authorization ID
- Insights from Analysis by Plan or Package Name



Types of Metrics in Db2 Accounting Data

- Getpages
- Prefetch requests
- Commits
- CPU times (classes 1 & 2)
- Elapsed times (classes 2 & 3)
- Suspend events
- SQL statements
- Row activity
- Sync I/Os
- Log throughput

Class 1, 2 and 3 Plan Accounting Data



- Class 1 is application perspective from Db2 thread creation to termination
- Class 2 provides Db2 elapsed and CPU time (Class 7 for package)
- Class 3 provides wait reasons within Db2 (Class 8 for package)



Insights from Analysis by Connection Type

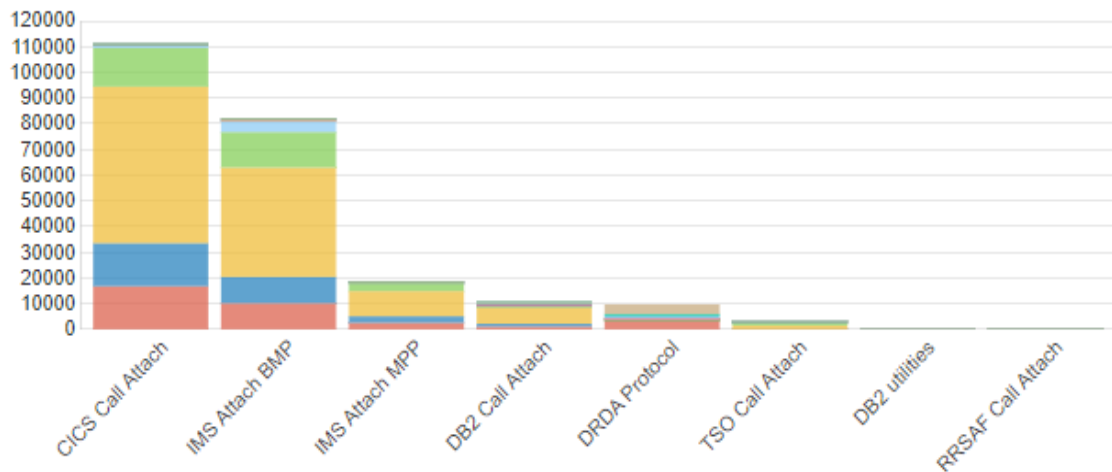
SQL STATEMENTS

for all Plan SQL Commands by Connection Type

Full report

Single day 7/2/2021

Interest group IGT, All sysplexes, All shifts, Interval Measurement



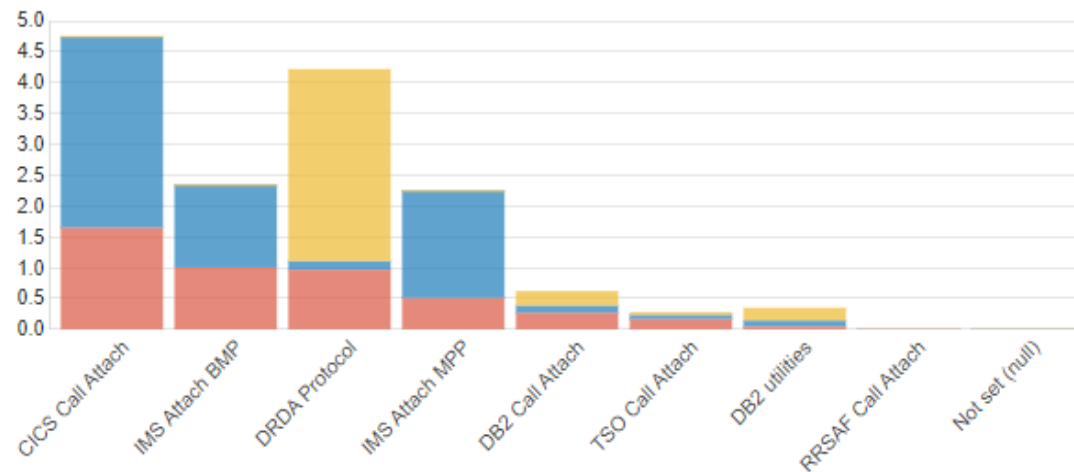
DB2 AND APPLICATION CP AND ZIIP USAGE

for all Plan Data by Connection Type

Full report

Single day 7/2/2021

Interest group IGT, All sysplexes, All shifts, Interval Measurement



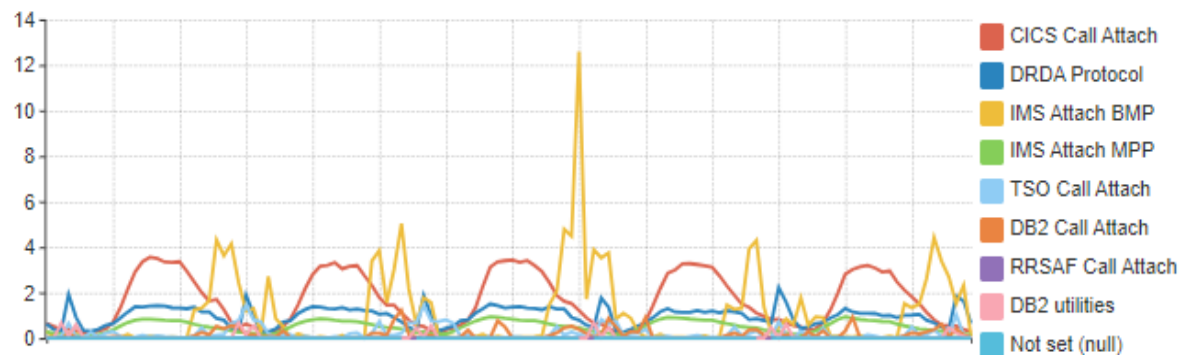
DB2 CP USAGE

for all Plan Data by Connection Type with filter on Data Sharing Group

Full report

All data 6/27/2021 12:00 AM - 7/3/2021 2:59 AM

Interest group IGT, All sysplexes, All shifts, Interval Hour



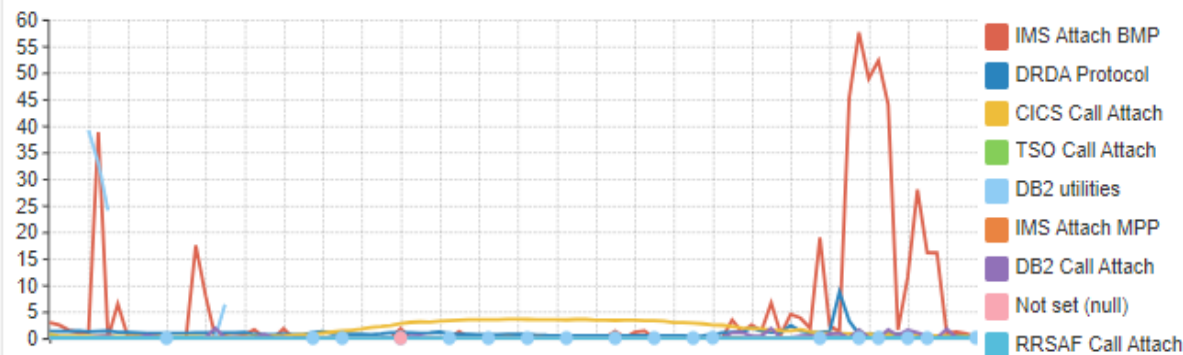
LOG THROUGHPUT

for all Plan Data by Connection Type with filter on Data Sharing Group

Full report

Single day 7/2/2021

Interest group IGT, All sysplexes, All shifts, Interval Measurement

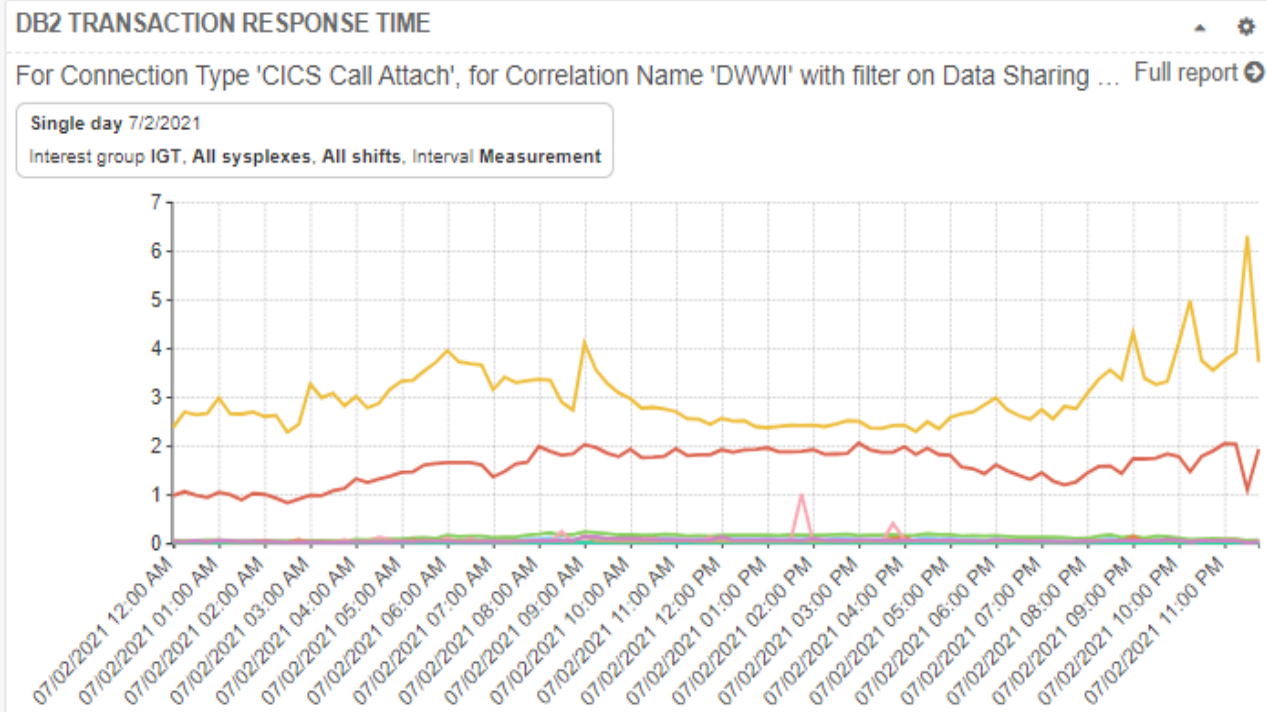
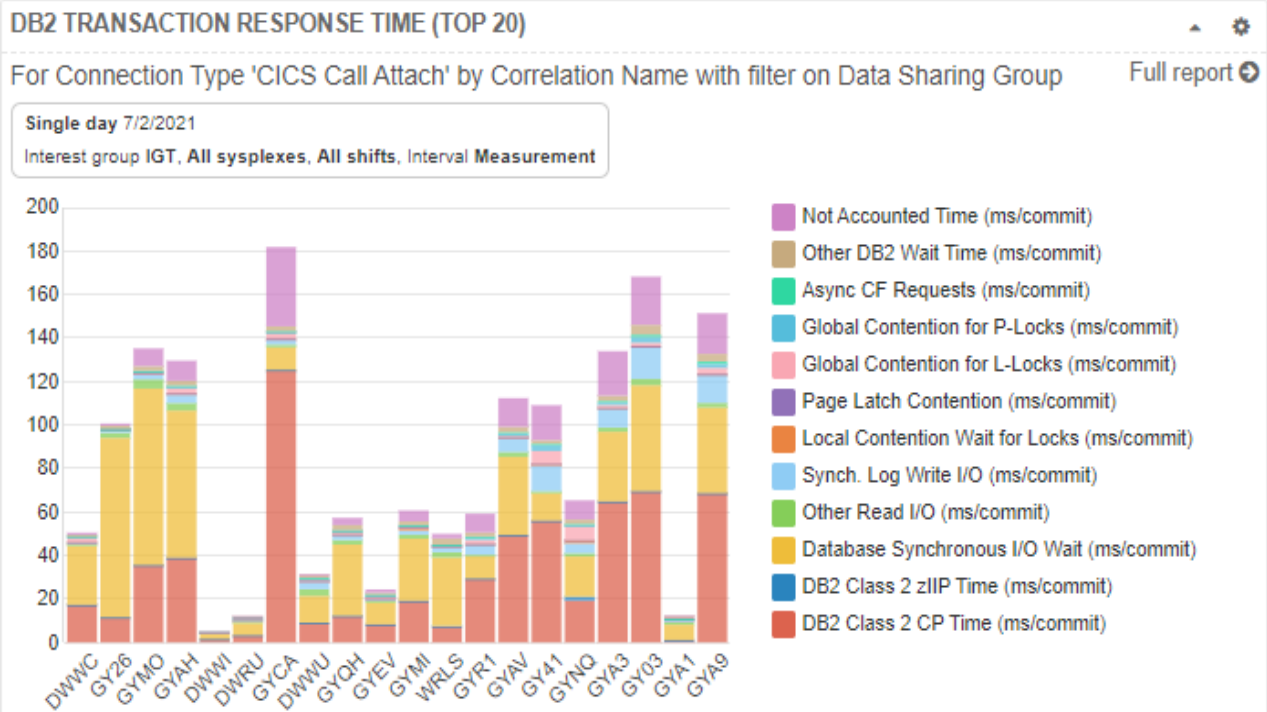
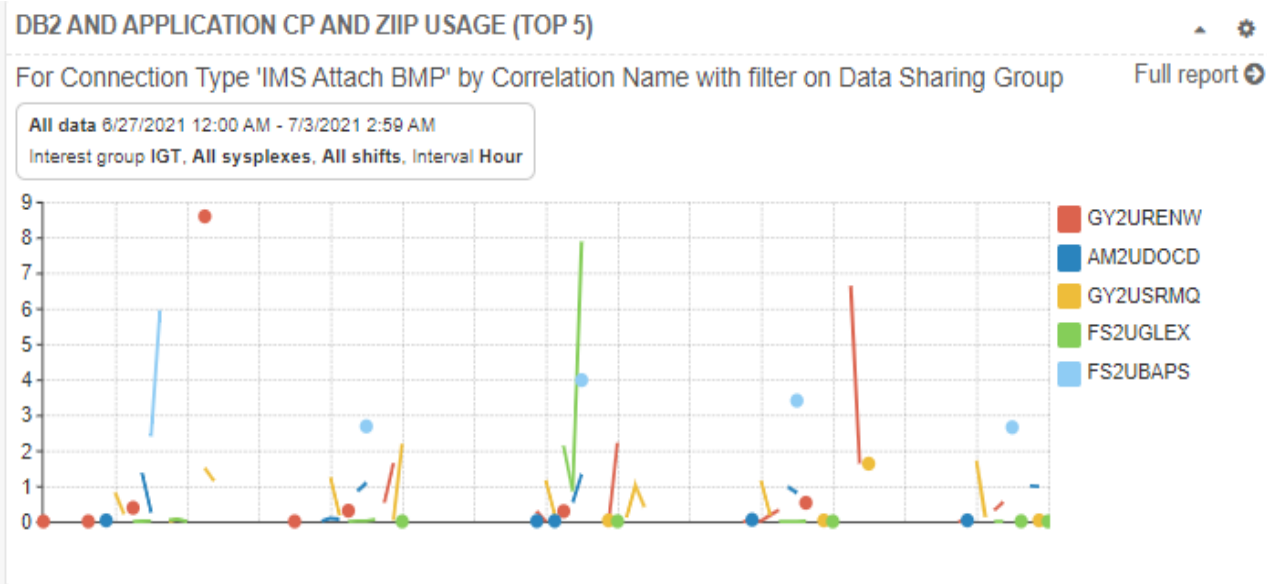
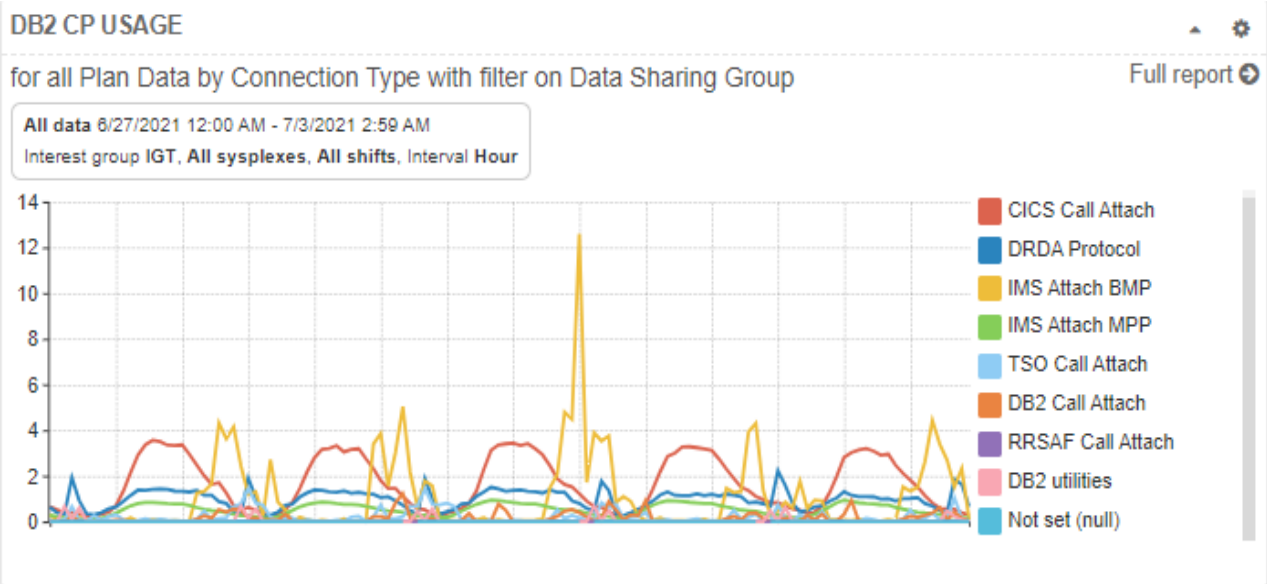




Insights from Analysis by Correlation ID

Correlation ID Contents by Connection Type

- CICS – transaction ID
- Db2/TSO Call Attach (batch) – job name
- DDF – DDM external name (EXTNAM) for client
- IMS – PSBNAME
- TSO – logon ID





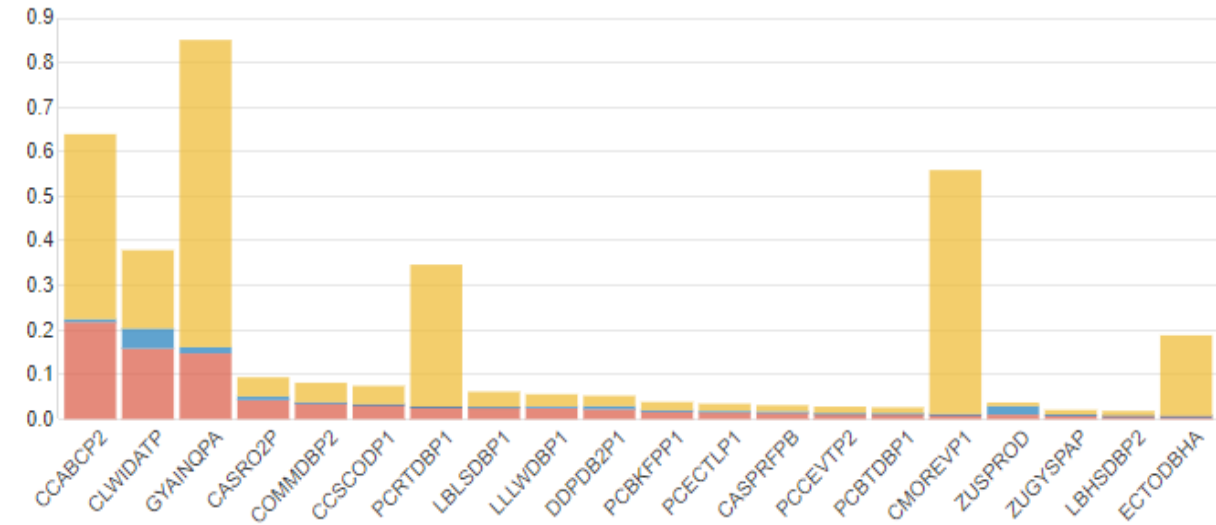
Insights from Analysis by Authorization ID

DB2 AND APPLICATION CP AND ZIIP USAGE (TOP 20)

For Data Sharing Group 'DB2H', for Connection Type 'DRDA Protocol' by Authorization ID with filt... Full report

Single day 7/2/2021

Interest group IGT, All sysplexes, All shifts, Interval Measurement

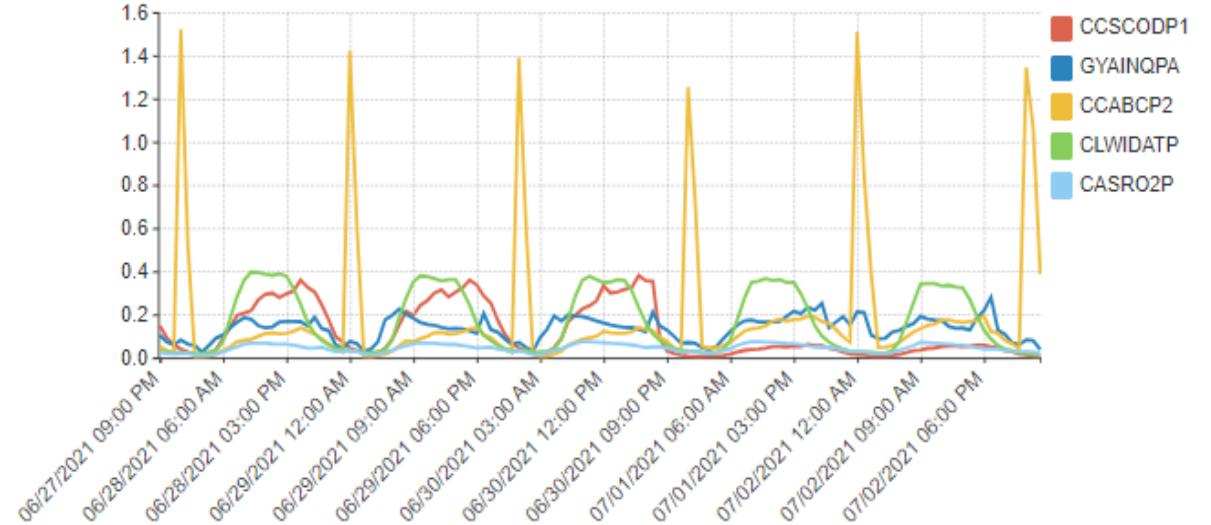


DB2 GCP USAGE (TOP 5)

For Data Sharing Group 'DB2H', for Connection Type 'DRDA Protocol' by Authorization ID with filt... Full report

All data 6/27/2021 12:00 AM - 7/3/2021 2:59 AM

Interest group IGT, All sysplexes, All shifts, Interval Hour

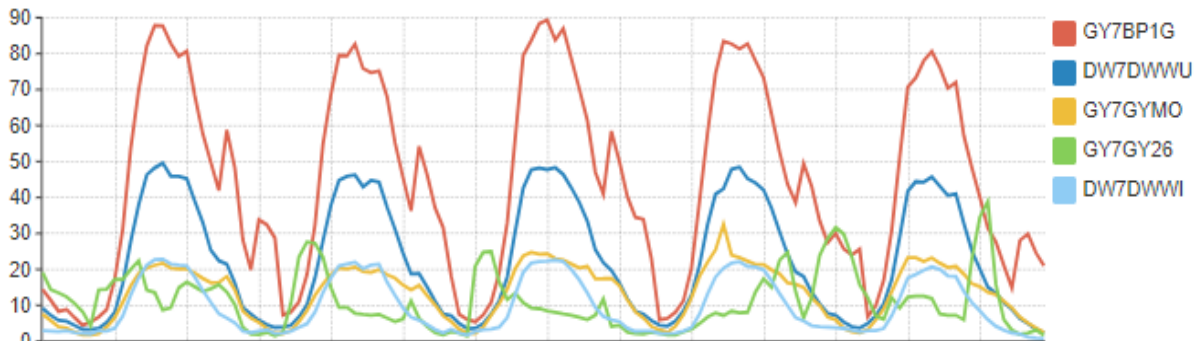


DB2 CLASS 2 CP TIME (TOP 5)

For Data Sharing Group 'DB2H', for Connection Type 'CICS Call Attach' by Plan Name with filter ... Full report

All data 6/27/2021 12:00 AM - 7/3/2021 2:59 AM

Interest group IGT, All sysplexes, All shifts, Interval Hour

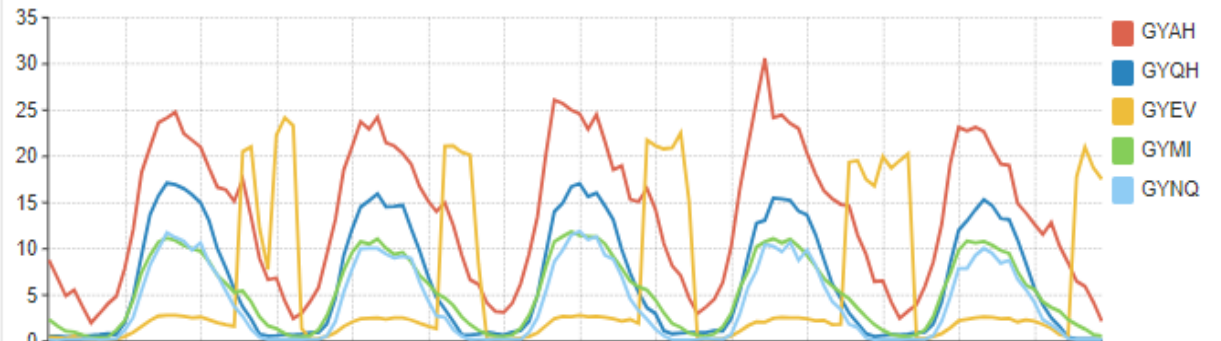


DB2 CLASS 2 CPU (TOP 5)

For Plan Name 'GY7BP1G' by Correlation Name with filter on Data Sharing Group, Plan Name Full report

All data 6/27/2021 12:00 AM - 7/3/2021 2:59 AM

Interest group IGT, All sysplexes, All shifts, Interval Hour





Insights from Analysis by Plan or Package Name

Types of Metrics in Db2 Accounting Data

- Getpages
- Prefetch requests
- Commits
- CPU times (classes 1 & 2)
- Elapsed times (classes 2 & 3)
- Suspend events
- SQL statements
- Row activity
- Sync I/Os
- Log throughput



Capabilities to Gain More Insights from SMF Data

Gaining More Insights from SMF Data

- Primarily used in reactive manner
 - Proactive identification of potential risks to availability and performance
- Siloed tooling across disciplines
 - Common interface into data types across platform promotes collaboration
- Need to anticipate desired views in static reports
 - Dynamic navigation to explore data based on current view

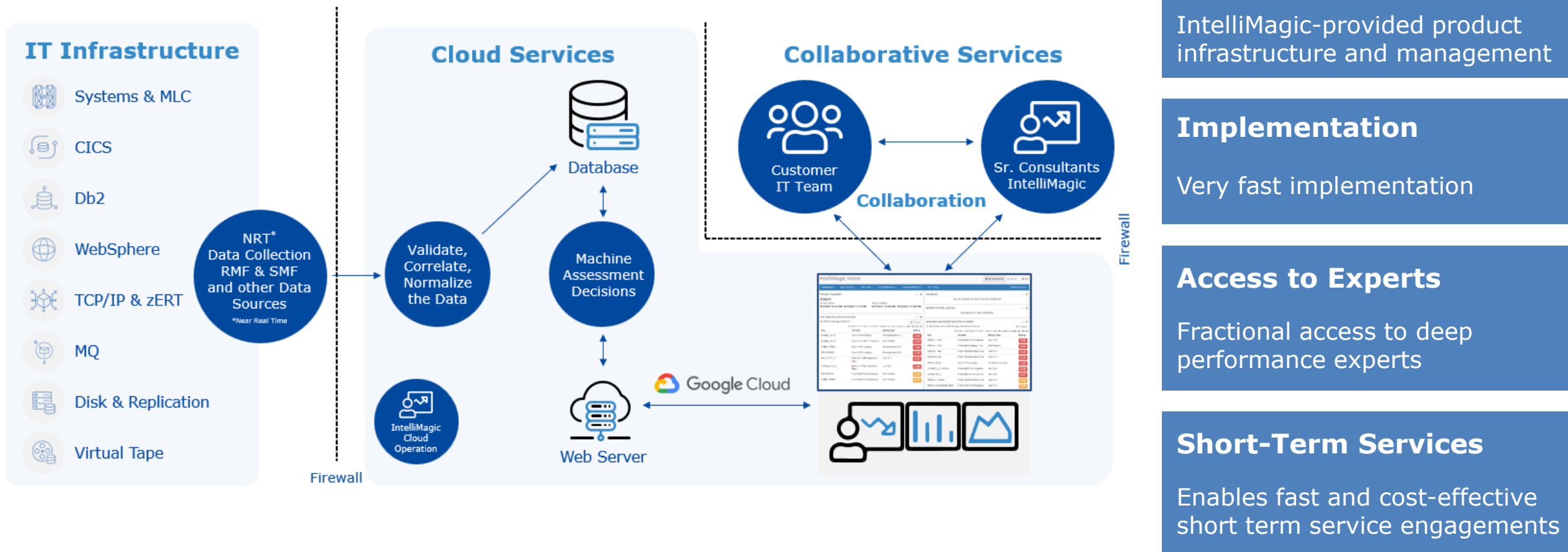
Gaining More Insights from SMF Data

- Focused analysis despite massive data volumes
 - Context sensitive drill downs to quickly focus on desired subset of data
- Declining expertise with retirements of tenured staff
 - Intuitive visibility expedites bringing newer staff up to speed
 - Interactive dialog to customize reports eliminates need to write programs



Questions?

IntelliMagic Cloud: Focus + Access to Experts



Product Infrastructure

IntelliMagic-provided product infrastructure and management

Implementation

Very fast implementation

Access to Experts

Fractional access to deep performance experts

Short-Term Services

Enables fast and cost-effective short term service engagements



Thank you for attending!

zAcademy sessions are available on-demand at
intellimagic.com/zacademy

For additional information, please contact
info@intellimagic.com