



# SQL to IMS



**Michael Schäfer**  
**Saarstahl AG, Germany**

# Agenda

---

- Motivation
- S2I basics & features
- Live Demo

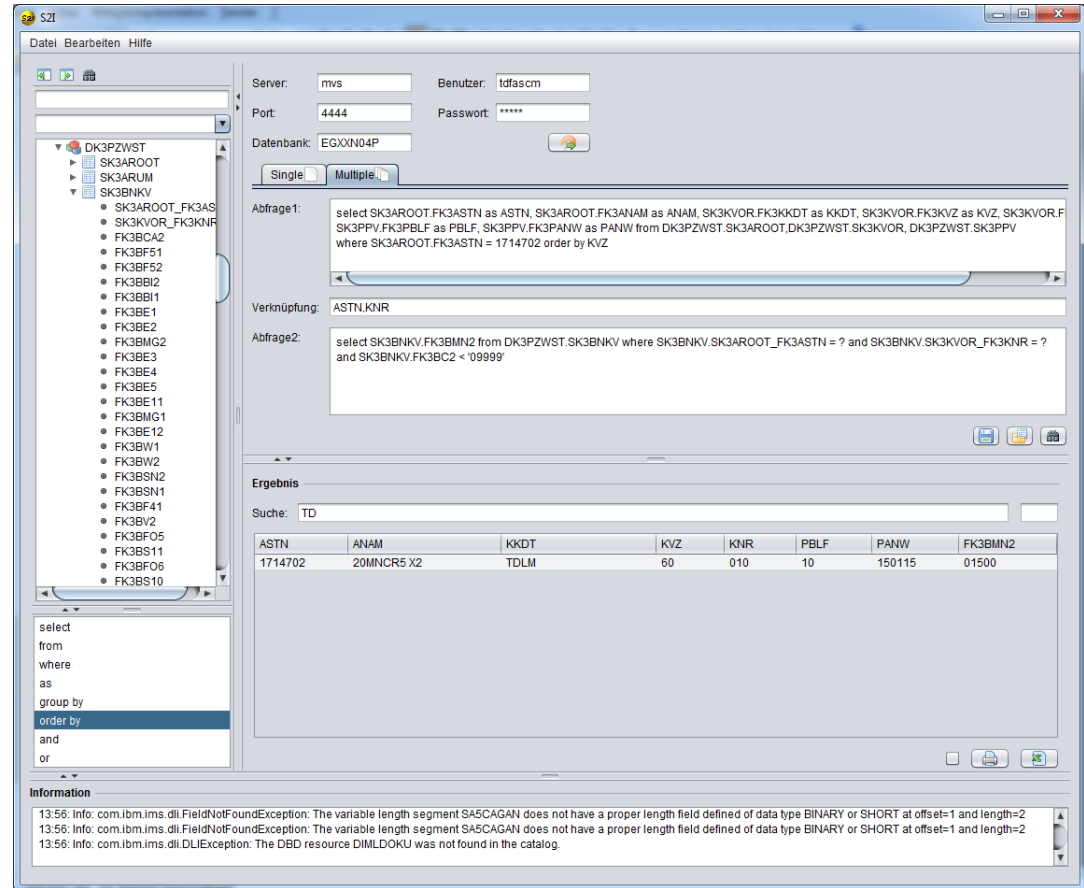
# Motivation

---

- With the upgrade to IMS 12 we need a new tool to browse IMS data.
- Developer and customer needs
  - Easy and intuitive to use
  - Just one tool
  - Usable for people with less knowledge of computer science

# S2I

- Java client
- SQL queries
- metadata
- familiar environment



# S2I basics & features

- Join data from several PCBs
- Aliases

DA5PAUFT.SA5PPOLO.FA5PAAU=AUFTRAG

DEGPCHAR.SEGGIESS.FEGRE2AS=GERZGEWN|GLDGANL|FEGRE2AS

DEGPCHAR.SEGGIESS.GERZGEWN=41,6

DEGPCHAR.SEGGIESS.GLDGANL=25,1

- No statements for data manipulation

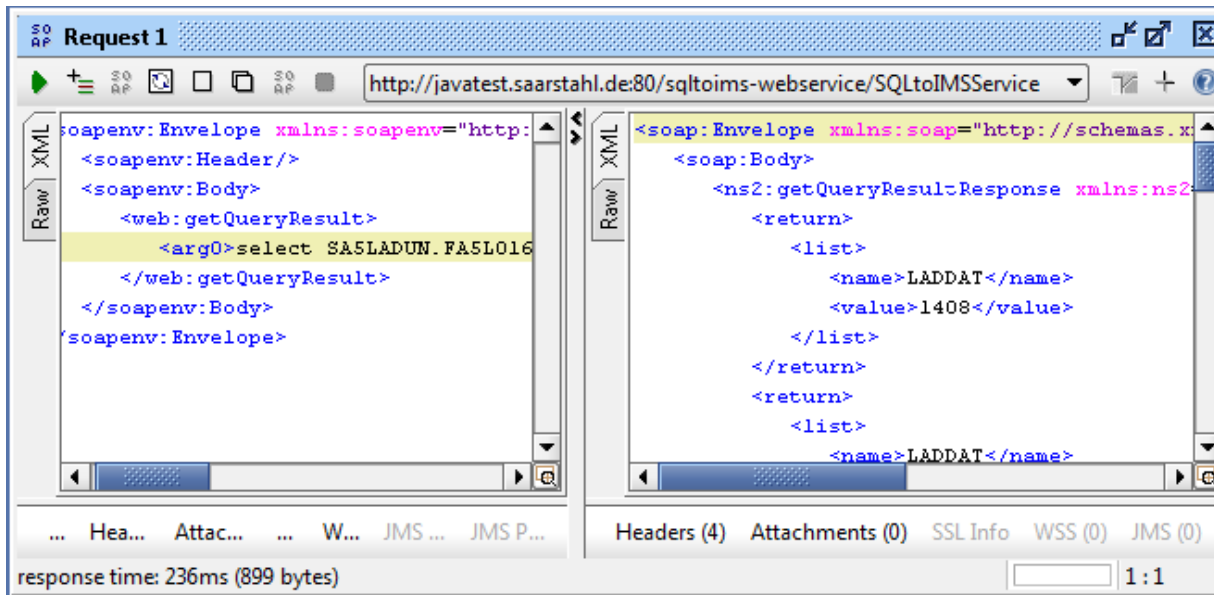
# S2I basics & features

---

- Search data with regular expression
- In-Memory search function (model based)
- Substring and sum functionality
- Export to Excel

# S2I basics & features

- S2I core as a web service



The screenshot displays a web service client interface with two panels. The left panel shows the raw XML of a SOAP request, and the right panel shows the raw XML of the SOAP response. The status bar at the bottom indicates a response time of 236ms (899 bytes).

```
Request 1
http://javatest.saarstahl.de:80/sqltoims-webservice/SQLtoIMSService

Raw XML
<soapenv:Envelope xmlns:soapenv="http://schemas.xmlsoap.org/soap/envelope/">
  <soapenv:Header/>
  <soapenv:Body>
    <web:getQueryResult>
      <arg0>select SA5LADUN.FASL016
    </web:getQueryResult>
  </soapenv:Body>
</soapenv:Envelope>

Raw XML
<soap:Envelope xmlns:soap="http://schemas.xmlsoap.org/soap/envelope/">
  <soap:Body>
    <ns2:getQueryResultResponse xmlns:ns2="http://schemas.xmlsoap.org/soap/...">
      <return>
        <list>
          <name>L&DDAT</name>
          <value>1408</value>
        </list>
      </return>
    </ns2:getQueryResultResponse>
  </soap:Body>
</soap:Envelope>

... Hea... Attac... ... W... JMS ... JMS P...
response time: 236ms (899 bytes) 1:1
```

- Other use cases
  - Combine IMS data with other software(e.g. data warehouse, QlikView)

S2I

Datei Bearbeiten Hilfe

Server: mvs Benutzer: tdfascm  
 Port: 4444 Passwort: \*\*\*\*\*  
 Datenbank: EGXXN04P

Single Multiple

Historie:

```
select distinct SEGPCCHAR.FEGCHSTR as CHAR, SEGPCCHAR.FEGMET1R as G, SEGGIESS.GFEHLER, SEGGIESS.GERZGEWN
from DEGPCCHAR.SEGPCCHAR, DEGPCCHAR.SEGGIESS
where CHAR > 860000 and SEGPCCHAR.FEGCDSTR = '0111114' and SEGPCCHAR.FEGMET1R != 8 and SEGGIESS.GFEUR1GI > 00
```

# Live Demo

Ergebnis

Suche:

CHAR	G	GFEHLER	GERZGEWN
864484	2	GP341	002302
864500	2	GP141	004096
864502	2	KS156	020843
864503	2	KS156 GP141	002605
864508	2	KS156	005004
864509	2	RG124	059927
864512	2	KS156	022455
864514	2	OF365	005211
864515	2	OF365	010422
864516	2	OF371	023594
864538	2	GP141	016881

select  
from  
where  
as  
group by  
order by  
and  
or

Information

13:07: Info: com.ibm.ims.dli.FieldNotFoundException: The variable length segment SAS5CAGAN does not have a proper length field defined of data type BINARY or SHORT at offset=1 and length=2  
 13:07: Info: com.ibm.ims.dli.FieldNotFoundException: The variable length segment SA5CAGAN does not have a proper length field defined of data type BINARY or SHORT at offset=1 and length=2  
 13:07: Info: com.ibm.ims.dli.DLIException: The DBD resource DIMLDOKU was not found in the catalog.





**Thank you for your kind  
attention**